



**RHINO**

***BUILD TO PROTECT  
ON THE ROAD, OFF THE ROAD***

*Introducing the RHINO, a protection solution that is more than just a film – it's a silent guardian for your car's paint, a defender against the relentless forces of the road. The RHINO's shield unfolds to reveal a revolutionary protective layer, seamlessly adhering to the contours of your vehicle like a second skin. Crafted with ingenuity, inspired by the majestic rhinoceros, our Paint Protection Film encapsulates the spirit of robust defense and unwavering strength.*

*Unleash the power of RHINO, and let your car's paint exude a radiance that defies the trials of time and terrain. It becomes a fortress, a sanctuary for your vehicle's pristine allure. The RHINO PPF isn't merely a shield; it's a statement, a pledge to safeguard your automotive investment with an unparalleled fusion of technology and aesthetics.*

## Our Brand Partners



### PET

**Cashew** (Japan)

**Lubrizol** (USA)

**Ashland** (USA)  
always solving

**'TORAY'** (Japan)  
Innovation by Chemistry



Prevent Scratches



Self Healing



Hydrophobic



High Gloss



UV Protection



Chemical Resistant

## SM 10 – Clear Glossy PPF



## Physical Properties

Classification		Unit	Spec	Remark
Thickness 175 um	Clearcoat	um	50±2%	PET
	Self-healing Coat	um	6.5±2%	Cashew Japan
	Face Film	um	145±5%	BASF Germany Polyurethane
	Acrylic Adhesive	um	25±2%	Ashland USA Solvent based
	Release liner	um	75±2%	Toray Japan Satin Semi-transparent
Surface		—	Glossy Clear	Super Glossy
Adhesive appearance		—	Clear	-
Width/roll		mm	1520±0.01%	5ft
Length/roll		mm	1500+1%	49.21ft

1 mil = 25.4 micron

# SM 15 - Optimum Black PPF



## Physical Properties

Classification		Unit	Spec	Remark
Thickness 190 um	Clearcoat	um	50±2%	PET
	Self-healing Coat	um	6.5±2%	Cashew Japan
	Face Film	um	160±5%	BASF Germany Polyurethane
	Acrylic Adhesive	um	25±2%	Ashland USA Solvent based
	Release liner	um	75±2%	Toray Japan Satin Semi-transparent
Surface		—	Glossy Clear	Super Glossy
Adhesive appearance		—	Clear	-
Width/roll		mm	1520±0. 01%	5ft
Length/roll		mm	1500+1%	49.21ft

# SM 20 – Satin Matte PPF



## Physical Properties

Classification		Unit	Spec	Remark
Thickness 190 um	Clearcoat	um	50±2%	Not available
	Self-healing Coat	um	6.5±2%	Cashew Japan
	Face Film	um	160±5%	BASF Germany Polyurethane
	Acrylic Adhesive	um	25±2%	Ashland USA Solvent based
	Release liner	um	75±2%	Toray Japan Satin Semi-transparent
Surface		—	Glossy Clear	Satin Matte
Adhesive appearance		—	Clear	-
Width/roll		mm	1520±0. 01%	5ft
Length/roll		mm	1500+1%	49.21ft

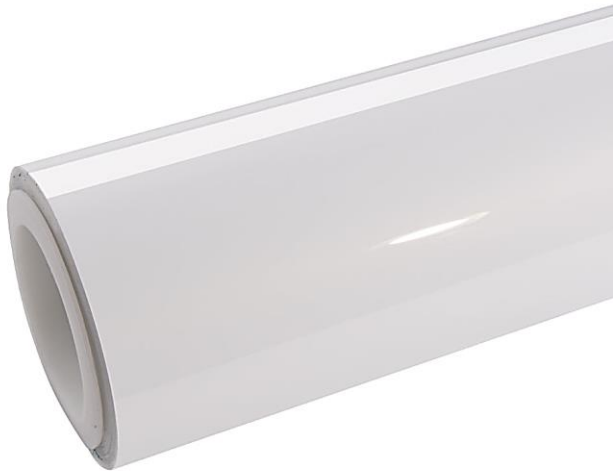
## SM 75 - Aliphatic Glossy



## Physical Properties

Classification		Unit	Spec	Remark
Thickness 190 um	Clearcoat	um	50±2%	PET
	Self-healing Coat	um	6.5±2%	Cashew Japan
	Face Film	um	160±5%	Lubrizol USA Thermoplastic Polyurethane
	Acrylic Adhesive	um	25±2%	Ashland USA Solvent based
	Release liner	um	75±2%	Toray Japan Satin Semi-transparent
Surface		—	Glossy Clear	Super Glossy
Adhesive appearance		—	Clear	-
Width/roll		mm	1520±0.01%	5ft
Length/roll		mm	1500±1%	49.21ft

# SM 85 - Aliphatic Glossy



## Physical Properties

Classification		Unit	Spec	Remark
Thickness 215 um	Clearcoat	um	50±2%	PET
	Self-healing Coat	um	6.5±2%	Cashew Japan
	Face Film	um	185±5%	Lubrizol USA Thermoplastic Polyurethane
	Acrylic Adhesive	um	25±2%	Ashland USA Solvent based
	Release liner	um	75±2%	Toray Japan Satin Semi-transparent
Surface		—	Glossy Clear	Super Glossy
Adhesive appearance		—	Clear	-
Width/roll		mm	1520±0. 01%	5ft
Length/roll		mm	1500+1%	49.21ft



# E-Warranty

As part of our commitment to quality and customer satisfaction, RHINO films are backed by our comprehensive warranty.

To register your warranty and ensure ongoing support, please scan the QR code below or enter the URL provided directly into your web browser. This will lead you to a form where you can provide important information about the application of your RHINO PPF you have purchased.

Please take care to fill out the form accurately and completely, following the instructions provided. Rest assured, the information you provide will be handled with care and will not be shared with any third parties.



[bit.ly/rhinowarranty](https://bit.ly/rhinowarranty)

## **Disclaimer**

All trademarks, logos and brand names are the property of their respective owners. All company, product and service names used in this sheet are for identification purposes only. Use of these names, trademarks and brands does not imply endorsement. Brands affiliations are based on market information and intended to show the affiliation of source of material used in manufacturing of the Paint Protection Films (PPF).

RHINO, the manufacturer of the RHINO Paint Protection Film (PPF) guarantees the product for up to 7 years of ownership of the vehicle against yellowing, peeling, bubbling and cracking. This is dependent on full notice being taken of the aftercare instructions as laid out on the provided warranty card after the installation. This guarantee is not transferable. Each model has its own limitation and warranty. Kindly seek your supplier for the terms of warranty.

RHINO cannot guarantee any PPF to eliminate stone chips, but state that the PPF is there to reduce the damage and impact caused by such road debris.

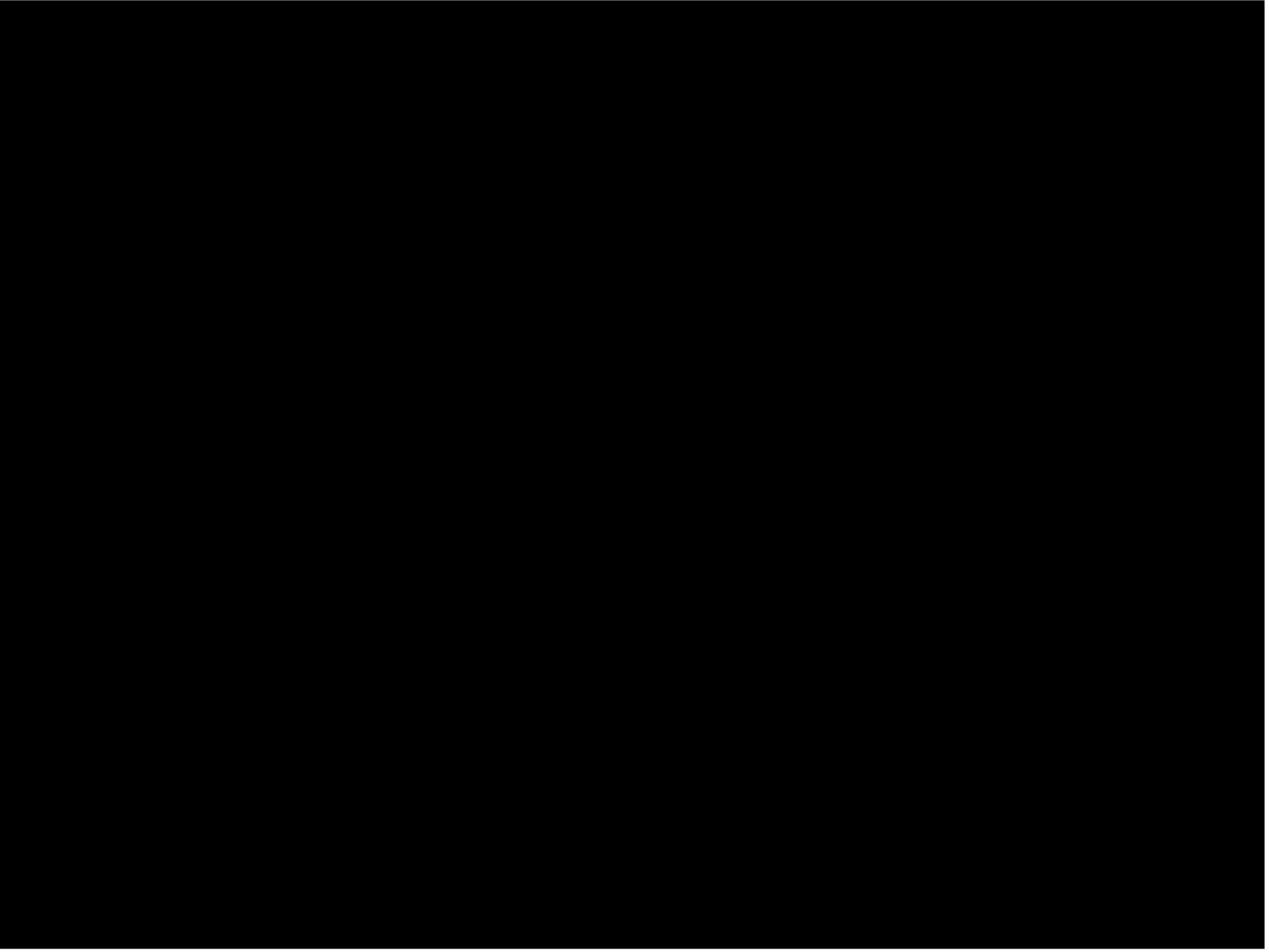
Yellowing caused by dust or grim or poor cleaning will not be considered as yellowing. However the market factors of yellowing will be applicable and level 3 optical paling will be considered as pail or yellow PPF.

Paint damage caused by removal of PPF is warranted under limited conditions and safe removal procedures. RHINO suggest using standard professional removal using lift and pull method after heating the PPF at 40-50 C through hot air or steam. Any repainted surfaces or plastic parts are not covered under this warranty.

## **RHINO Aftercare Instructions**

We would like to bring to your attention some aftercare instructions.

1. Do not wash your car for at least 3 days after installation, which will allow for the film to cure to the paintwork of your vehicle, otherwise edge lift may occur which may not be repairable.
2. Slight milkiness, patchiness, silvering or bubbles may occur or appear after installation. This is nothing to be concerned about, as this is usually due to moisture dissipating from underneath the film from application. This can in some cases take up to 30 days to disappear, which is why this is clearly stated on the warranty form.
3. Once the initial waiting period is over, you can and should clean the film on a regular basis with a regular car shampoo and then apply detailers/sealants on the film with a good quality automotive PPF sealant/detailer on a regular basis.
4. If using a jet wash, you should not use the appliance at less than 3 feet from your vehicle, as this may cause damage to paintwork.
5. It is advisable to remove any bird droppings from the film as quickly as possible, as the acid content of the droppings may have a detrimental effect on the film over time.
6. Do not use waxes, abrasive chemicals or paint restoration products on the film as this may damage the clear coating of the film.





**RHINO**

***BUILD TO PROTECT  
ON THE ROAD, OFF THE ROAD***